



Robert Miles Infant School

Friday 15th May 2020

Dear Parents

I had hoped to be writing to you today with a definite plan of what our phased reopening would look like. The anxiety levels for you as parents, the children and the staff at all schools at the moment is extremely high and we all have a strong desire to know what is going to happen, when and how.

Unfortunately, the ground is constantly shifting. The Government didn't produce their initial guidance until Monday evening and so on Tuesday we began to make plans. Yesterday they produced further guidance which meant we needed to look again at those plans. Today the Teaching Unions and the Government are meeting with scientific advisors and so the ground may shift again this afternoon. Therefore as a Trust we have decided to wait until early next week to give dates and times and precisely what the provision will look like.

At the moment, what I can give information about is what the provision in school will look like and what measures will be in place to keep everyone as safe as possible (more information over the page). The arrangement of the classrooms will look very different to how school was before the lockdown. We will have staggered start and finish times and a one-way system to access the building. It may not be full-time, children may not be taught by their usual class teacher in their usual classroom. The curriculum that the children receive will also be very different and the staff will need to remain socially distanced from the children. However, we also know that these are our youngest children who need to be cared for and nurtured so their well-being will be our top priority.

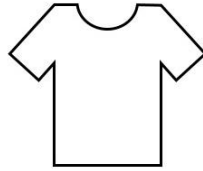
I am sorry I cannot be clearer with concrete arrangements at this time, but I hope this goes some way to explaining the situation. I will be back in touch as soon as I can.

Best wishes

Parents & Carers: How we need you to help us re-open school safely



No school if there are ANY symptoms in your home



No uniform is necessary:
Clean clothes every day



Wash school clothes after one day of use



No personal belongings or books to travel to / from school



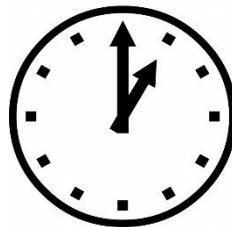
Packed lunches in boxes or disposable bags only



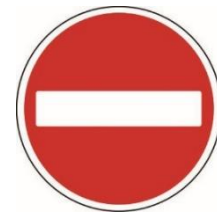
Thoroughly wash lunch boxes every day



Walk or Cycle:
This will avoid creating crowds trying to park cars near school.



Be on time:
This will reduce risk by keeping your child from mixing with other groups



Parents are not allowed in the school building.
If you wish to speak to a teacher please email or telephone.



Obey the special signs and one-way system around school.
There will be staff outside to direct you.



Keep a safe distance from other families whilst waiting at the start and end of the school day.

How we are keeping your child safe in school

We will operate a one-way system in school coming in through the main carpark gates, across the playground, past reception and back out through the small side gate at the far end of the car park.

Your child will be in a bubble, not a class. This may not be their usual classroom and they will not be with their usual teacher.

Each bubble has a maximum of 15 children depending on the size of room they are based in.

Your child's bubble will not mix with children from any other bubble at all during school hours. This means that if there is an infection in one bubble, all other bubbles are protected.

Your child's bubble will have:

- It's own entrance door
- It's own start time
- It's own teacher
- It's own handwashing facilities and hand sanitizer
- It's own cleaning products
- It's own break time (socially distant games only)
- It's own home time

In their bubble, your child will have:

- Their own table and chair socially distant from the nearest child
- Their own books, stationery and resources

We will be keeping your child's bubble as clean as possible by:

- Expecting all parents to do their bit using the rules over the page
- Emptying bins for tissues regularly throughout the day
- Cleaning surfaces regularly throughout the day
- Insisting on handwashing regularly throughout the day
- Undertaking a deeper clean at the end of every day
- Not allowing staff or children from other bubbles into your child's bubble

- **This will only work if you keep your child safe when they are not at school. Children who go out to play with other children will be a high risk to their bubble when they come back to school.**